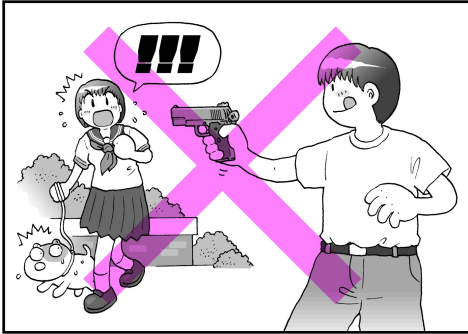


KJWORKS
MK-2
MANUAL

WARNING:

BEFORE USAGE, THE INSTRUCTION MUSE BE READ.

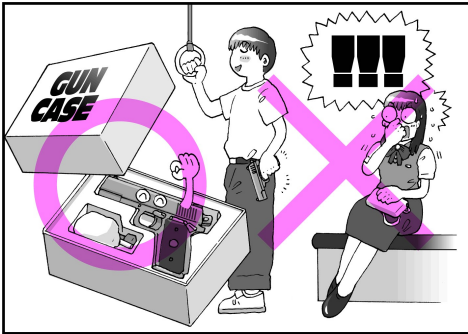
THANK YOU FOR PURCHASING. THE FOLLOWING ATTENTION POINTS AND INSTRUCTIONS MUST BE READ. SHOOTING WITHOUT CAUTION OR USED IMPROPERLY, BLINDNESS OR INJURIES COULD BE LEAD.



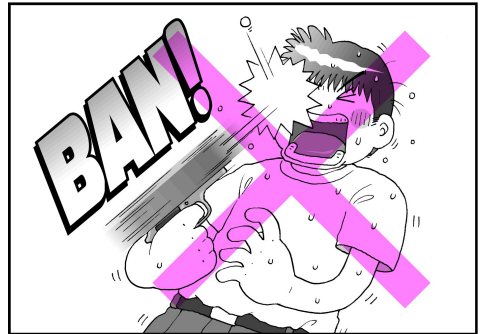
DO NOT POINT AT PEOPLE OR ANIMAL.



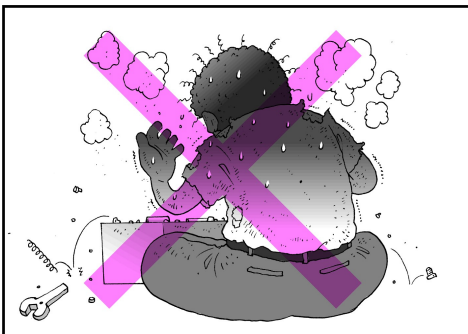
GUN AND GAS MUST NOT BE PLACED IN AREA WHERE TEMPERATURE IS OVER 40 °C



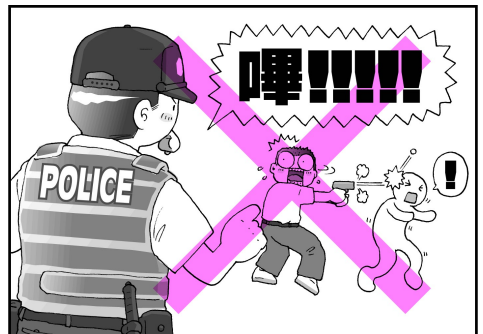
PLACE IN GUN CASE WHEN NOT IN USING OR TRANSPORTING



DO NOT LOOK THROUGH THE BARREL



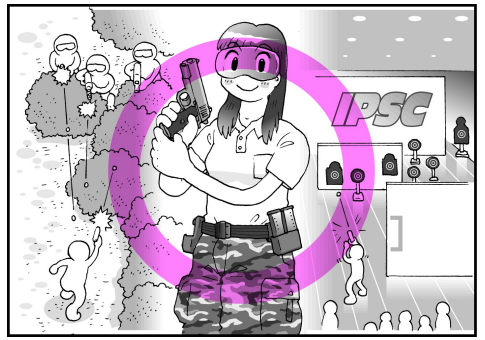
UNAUTHORIZED RECONSTRUCTION OF AIR SOFT GUN TO STRENGTHEN FIRING FUNCTION IS STRICTLY PROHIBITED.



BE CAREFULL WHAT TARGET YOU SHOOT



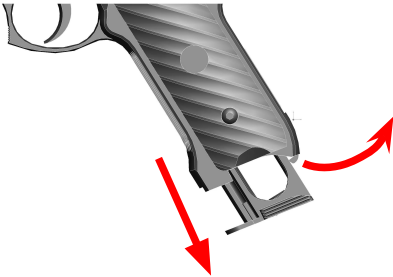
EYE PROTECTION DEVICE MUST BE EQUIPPED



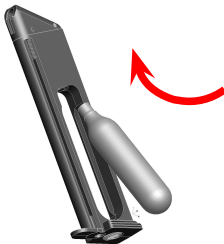
PLEASE SHOOT IN SAFE PLACE

OPERATION

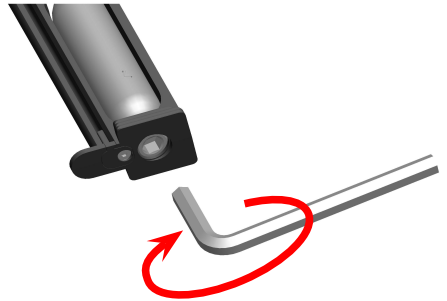
1. REMOVE THE MAGAZINE



2. INSERT CARTRIDGE



3. SCREW TIGHT THE NUT QUICKLY



4. LOAD BB

PLEASE DO NOT
LOAD OVER 17 BB



5.INSERT THE MAGAZINE



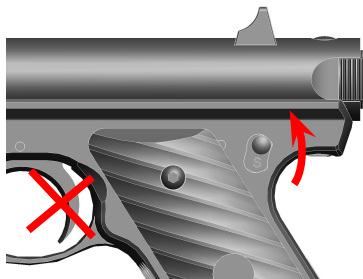
6.SWITCH THE SAFETY TO SAFETY OFF

SAFETY OFF

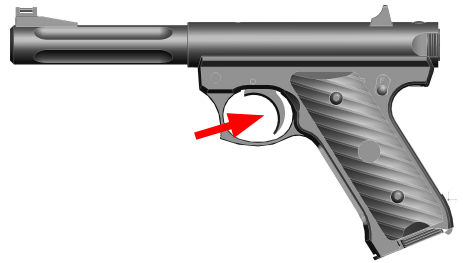


7. THE TRIGGER CAN NOT BE PULLED WHEN SAFETY IS IN SAFETY ON POSITION

SAFETY ON

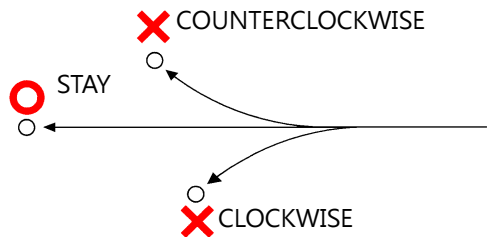


8.PULL THE TRIGGER



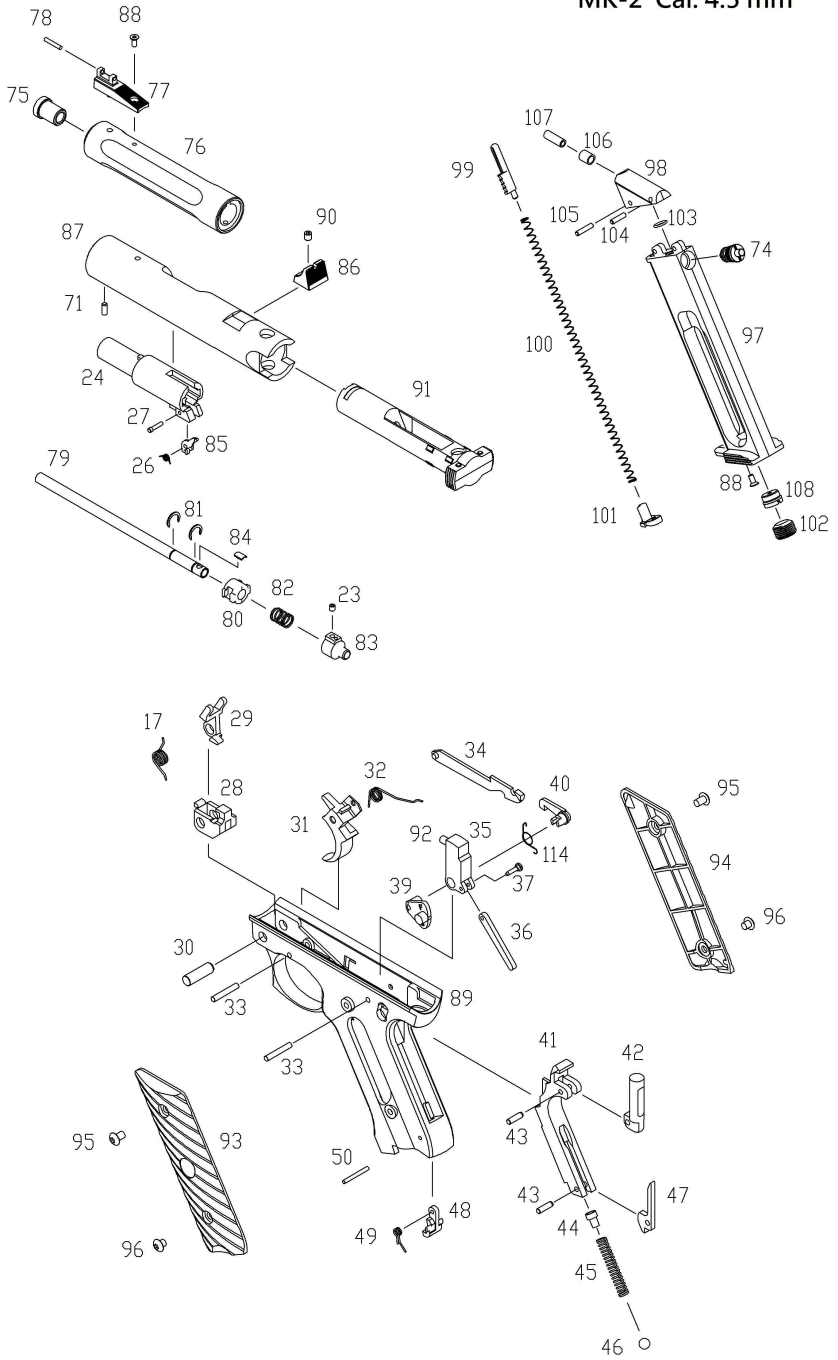
ADJUST TREJECTORY

USING WRENCH TO ADJUST THE RUBBER ACCORDING TO THE TRAJECTORY



THE BB COULD BE STOCK INSIDE THE CHAMBER WHEN THE SCREW IS OVER SCREWED

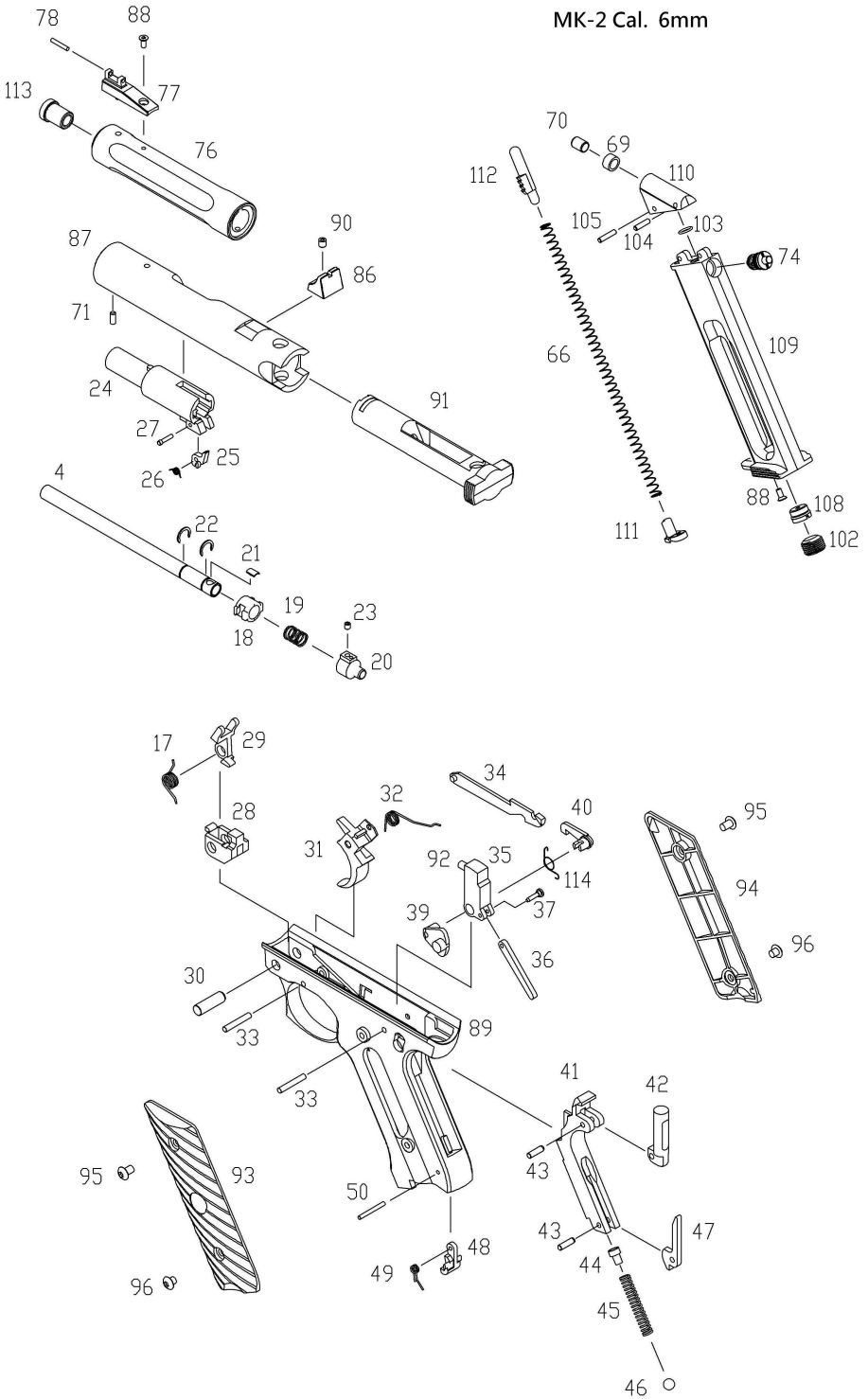
MK-2 Cal. 4.5 mm



MK-2 Cal. 4.5mm PART LIST

NO.	NAME	PRICE	NO.	NAME	PRICE
17	CAM SPRING	20	81	BARREL WASHER	20
23	ADJUST SCREW	20	82	BARREL BUFFER SPRING	20
24	RECEIVER BASE	150	83	CHAMBER	80
26	BULLET STOP SPRING	20	84	ADJUST RUBBER	40
27	BULLET STOP PIN	20	85	BB STOP	40
28	FRONT LOCK	50	86	REAR SIGHT	120
29	CAM	50	87	RECEIVER	360
30	FRONT LOCK PIN	20	88	SCREW	20
31	TRIGGER	100	89	FRAME	300
32	TRIGGER SPRING	20	90	REAR SIGHT SCREW	20
33	TRIGGER PIVOT	20	91	BOLT	240
34	DISCONNECTOR	80	92	FIRE PIN	20
35	HAMMER	80	93	GRIP LEFT	100
36	HAMMER STURT	60	94	GRIP RIGHT	100
37	HAMMER STURT PIN	20	95	GRIP SCREW	20
39	SAFETY	80	96	GRIP SCREW	20
40	SAFETY HOOK	60	97	LOWER MAGAZINE BODY	400
41	MAINSRING HOUSING	120	98	UPPER MAGAZINE BODY	240
42	BOLT STOP PIN	60	99	FOLLOWER	30
43	BOLT STOP RETAINING PIN	20	100	FOLLOWER SPRING	30
44	MAIN SPRING PLUNGER	50	101	FOLLOWER DETENT	30
45	MAIN SPRING	30	102	CARTRIDGE NUT	60
46	MAIN SPRING DETENT	10	103	JOINT O-RING	20
47	HOUSING LATCH	60	104	MAGAZINE PIN	20
48	MAGAZINE LATCH	60	105	MAGAZINE PIN	20
49	MAGAZINE LATCH SPRING	20	106	MAGAZINE GASKET	40
50	MAGAZINE LATCH PIN	20	107	MAGAZINE COLLAR	30
71	BARREL SCREW	20	108	CARTRIDGE STAB	150
74	EX-VALVE	250	114	HAMMER RETURN SP	30
75	MUZZLE	180			
76	OUT BARREL	360			
77	FRONT SIGHT	160			
78	FRONT SIGHT FIBER	20			
79	INNER BARREL	150			
80	BARREL BUFFER	80			

MK-2 Cal. 6mm



MK-2 Cal. 6mm PART LIST

NO.	NAME	PRICE	NO.	NAME	PRICE
4	INNER BARREL	150	69	MAGANINE GASKET	40
17	CAM SPRING	20	70	MAGAZINE COLLAR	30
18	BARREL BUFFER	80	71	BARREL SCREW	20
19	BARREL BUFFER SPRING	20	76	OUT BARREL	360
20	CHAMBER	80	77	FRONT SIGHT	160
21	ADJUST RUBBER	40	78	FRONT SIGHT FIBER	20
22	BARREL WASHER	20	86	REAR SIGHT	120
23	ADJUST SCREW	20	87	RECEIVER	360
24	RECEIVER BASE	150	88	SCREW	20
25	BB STOP	40	89	FRAME	300
26	BULLET STOP SPRING	20	90	REAR SIGHT SCREW	20
27	BULLET STOP PIN	20	91	BOLT	240
28	FRONT LOCK	50	92	FIRE PIN	20
29	CAM	50	93	GRIP LEFT	100
30	FRONT LOCK PIN	20	94	GRIP RIGHT	100
31	TRIGGER	100	95	GRIP SCREW	20
32	TRIGGER SPRING	20	96	GRIP SCREW	20
33	TRGGER PIVOT	20	102	CARTRIDGE NUT	60
34	DISCONNECTOR	80	103	JOINT O-RING	20
35	HAMMER	80	104	MAGAZINE PIN	20
36	HAMMER STURT	60	105	MAGAZINE PIN	20
37	HAMMER STURT PIN	20	108	CARTRIDGE STAB	150
39	SAFETY	80	109	LOWER MAGAZINE BODY	400
40	SAFETY HOOK	60	110	UPPER MAGAZINE BODY	240
41	MAINSRING HOUSING	120	111	FOLLOWER DETENT	30
42	BOLT STOP PIN	60	112	FOLLOWER	30
43	BOLT STOP RETAINING PIN	20	113	MUZZLE	180
44	MAIN SPRING PLUNGER	50	114	HAMMER RETURN SP	30
45	MAIN SPRING	30	115	EX-VALVE	250
46	MAIN SPRING DETENT	10			
47	HOUSING LATCH	60			
48	MAGAZINE LATCH	60			
49	MAGAZINE LATCH SPRING	20			
50	MAGAZINE LATCH PIN	20			
66	FOLLOWER SPRING	30			