

WARNING: BEFORE USAGE, THE INSTRUCTION MUST BE READ.

THANK YOU FOR PURCHASING. THE FOLLOWING ATTENTION POINTS AND INSTRUCTIONS MUST BE READ. SHOOTING WITHOUT CAUTION OR USED IMPROPERLY, BLINDNESS OR INJURIES COULD BE LEAD.



DO NOT POINT AT PEOPLE OR ANIMAL.



GUN AND GAS MUST NOT BE PLACED IN AREA WHERE TEMPERATURE IS OVER 40 °C



PLACE IN GUN CASE WHEN NOT IN USING OR TRANSPORTING



DO NOT USE GAS WHICH PRESSURE IS OVER 12 Kgs/cm²



UNAUTHORIZED RECONSTRUCTION OF AIR SOFT GUN TO STRENGTHEN FIRING FUNCTION IS STRICTLY PROHIBITED.



BE CAREFULL WHAT TARGET YOU SHOOT



EYE PROTECTION DEVICE MUST BE EQUIPPED



DO NOT LOAD ANYTHING BUT BB BULLETS.



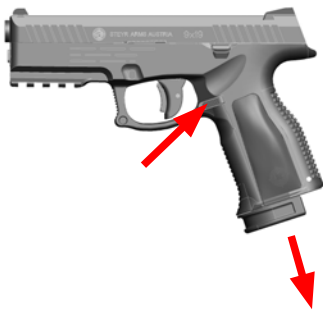
DO NOT LOOK THROUGH THE BARREL



PLEASE SHOOT IN SAFE PLACE

OPERATION

1. REMOVE THE MAGAZINE



PRESS MAGAZINE CATCH AND REMOVE MAGAZINE

2. FILLING GAS

GAS MAG

CO2 MAG



GAS MAG:
FILL THE GAS BOTTLE TO THE MAGAZINE IN VERTICAL DIRECTOR.

CO2 MAG:
Follow the instruction to insert the cartridge

3.LOAD BB

BB



PULL DOWN FOLLOWER AND LOAD BB.

4 INSERT MAGAZINE

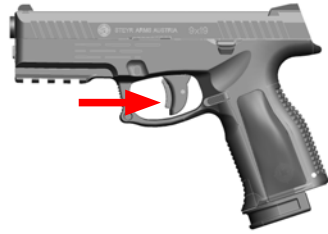


5.LOAD



PULL THE SLIDE TO LOAD

6.FIRE



PULL THE TRIGGER

7.SAFE

SAFETY ON



SWITCH TO "S" POSITION

SAFETY OFF



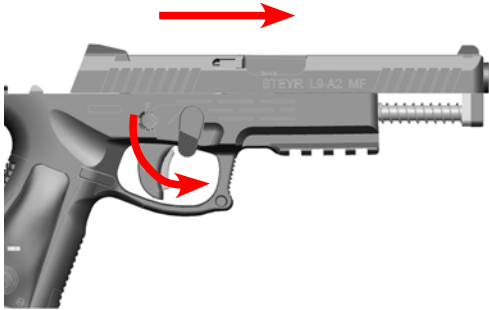
SWITCH TO "F" POSITION

DISASSEMBLY

1. PULL BACK SLIDE AND PULL DOWN SLIDE LOCK



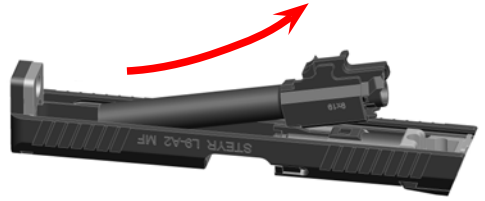
2. REMOVE THE SLIDE



3. REMOVE THE RECOIL SPRING AND GUIDE



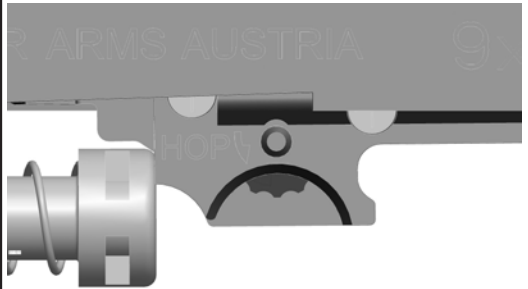
4. REMOVE THE BARREL



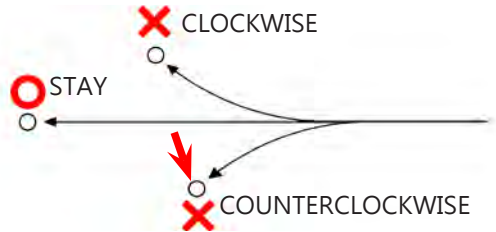
ASSEMBLY

REVERSE THE DISASSEMBLY

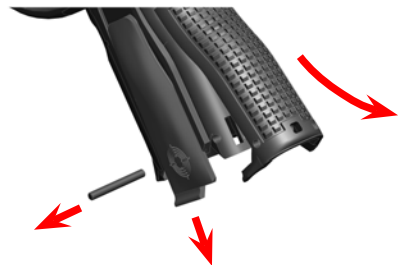
ADJUST TREJECTORY



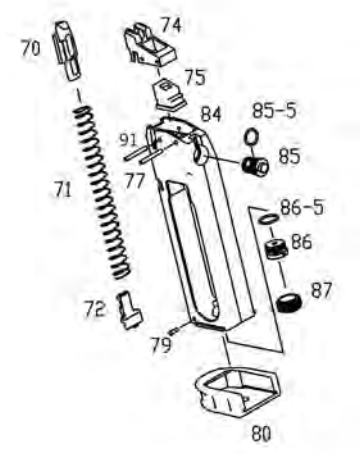
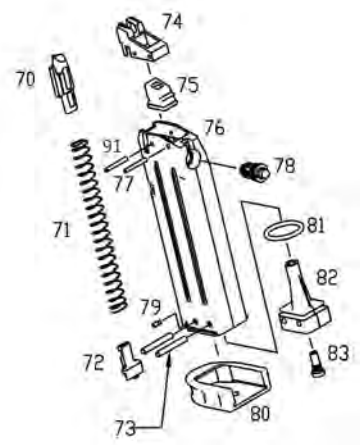
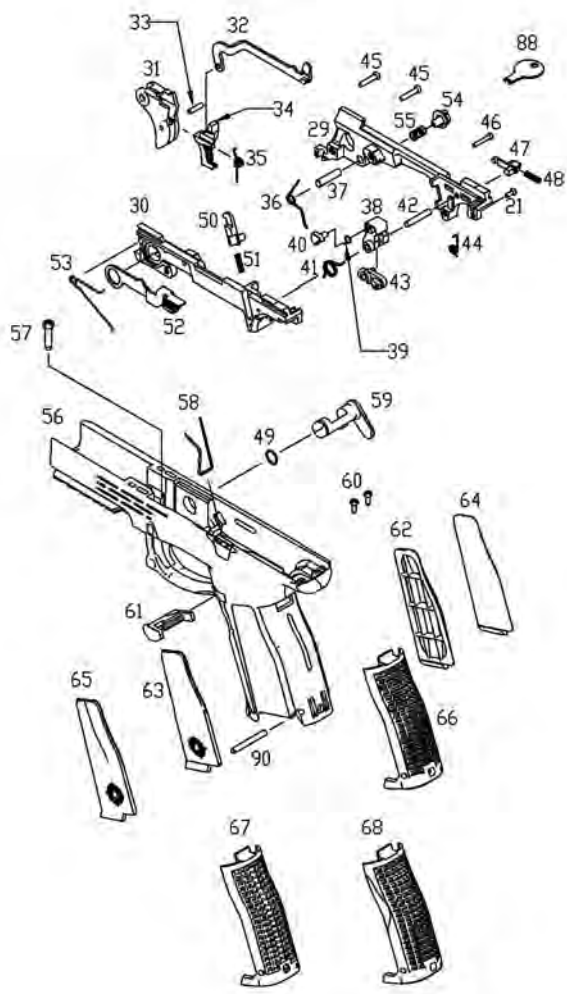
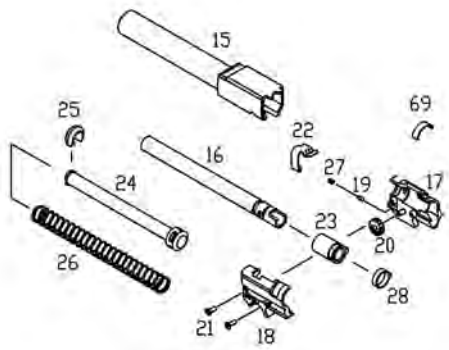
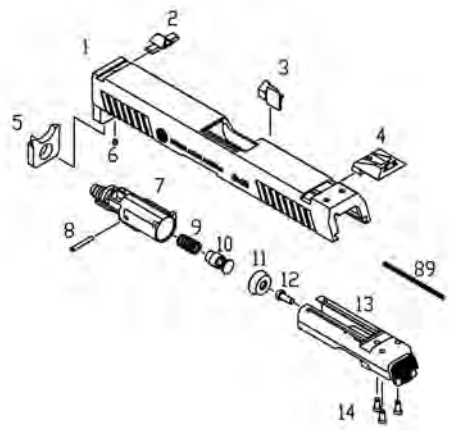
TURN ADJUST DIAL ACCORDING TO THE TREJECTORY



REPLACE GRIPS



REMOVE PIN AND GRIPS



NO.	NAME	PRICE	NO.	NAME	PRICE
1	SLIDE	1600	48	SEAR SPRING	25
2	FRONT SIGHT	180	49	TAKE DOWN LATCH O-RING	20
3	EXTRACTOR	140	50	VALVE LOCK	160
4	REAR SIGHT	180	51	VALVE LOCK SPRING	25
5	SLIDE BUFFER	120	52	SLIDE STOP	240
6	FRONT SIGHT SCREW	20	53	SLIDE STOP SPRING	40
7	CYLINDER	200	54	SAFETY	120
8	CYLINDER PIN	40	55	SAFETY SPRING	25
9	CYLINDER SPRING	25	56	LOWER FRAME	900
10	CYLINDER VALVE	40	57	LOWER FRAME SCREW	30
11	PISTON RING	60	58	MAG CATCH SPRING	40
12	PISTON SCREW	15	59	TAKE DOWN LATCH	200
13	PISTON	400	60	FRAME SCREW	15
14	REAR SIGHT SCREW	15	61	MAG CATCH	180
15	OUTTER BARREL	700	62	R-GRIP(S)	240
16	INNER BARREL	240	63	L-GRIP(S)	240
17	CHAMBER(R)	180	64	R-GRIP(M)	240
18	CHAMBER(L)	180	65	L-GRIP(M)	240
19	ADJUST DIAL DETENT	20	66	BACK STRAP(M)	300
20	ADJUST DIAL	50	67	BACK STRAP(S)	300
21	CHAMBER SCREW	20	68	BACK STRAP(L)	300
22	ADJUST LEVER	80	69	CARTRIDGE SHELL	80
23	RUBBER CHAMBER	100	70	FOLLOWER	50
24	RECOIL GUIDE	180	71	FOLLOWER SPRING	80
25	RECOIL GUIDE WASHER	50	72	MAG BOTTOM DEENT	40
26	RECOIL SPRING	80	73	MAG BASE PIN	25
27	ADJUST DIAL DETENT SPRING	20	74	BB LIP	100
28	RUBBER CHAMBER RING	60	75	GASKET	120
29	INNER FAME (R)	300	76	MAG BODY	500
30	INNER FRAME (L)	300	77	BB LIP PIN	25
31	TRIGGER	180	78	EX VALVE	200
32	TRIGGER BAR	240	79	MAG BOTTOM DEENT PIN	20
33	TRIGGER BAR PIN	30	80	MAG BOTTOM	160
34	TRIGGER SAFETY	80	81	MAG BASE O-RING	40
35	TRIGGER SAFETY SPRING	40	82	MAG BASE	220
36	TRIGGER SPINGR	40	83	CHARGING VALVE	80
37	TRIGGER PIN	30	84	CO2 MAG BODY	500
38	HAMMER	370	85	CO2 EX-VALVE	240
39	HAMMER CAM SPRING	30	85-5	EX-VALVE O-RING	30
40	HAMMER CAM	180	86	STAB	180
41	HAMMER SPRING	40	86-5	STAB O-RING	30
42	HAMMER PIN	30	87	CARTRIDGE SCREW NUT	100
43	KNOCKER	150	88	SAFETY KEY	80
44	KNOCKER SPRING	30	89	CYLINDER RETURN SPRING	40
45	INNER FRAME SCREW	25	90	GRIP PIN	30
46	INNER FRAME SCREW	25	91	BB LIP PIN	25
47	SEAR	160			